



NONSUCH MANSION



NONSUCH MANSION

Beautiful Surroundings | Exclusively Yours | Optional Cuisines

020 8786 7392
events@nonsuchmansion.com



NONSUCH MANSION

Nonsuch Mansion is the perfect setting for a truly special day!

One of Surrey's most sought after venues, the spectacular Georgian house is set within 300 acres of beautiful grounds and parkland!

External Catering

You are more than welcome to hire external caterers at the mansion if we can't offer the specific cuisine you're after.

'Dry Hire' of the mansion is a one off cost and will include:

- *Exclusive use of the venue and formal lawns for 12 hours*
- *NSM Tables and Chairs*

All other items such as, food, drinks, table clothes, glass wear etc. will be sourced through your Caterers.

Our Listed Caterers

- **Sapna** – Traditional Pakistani, Punjabi and Gujarati Cuisine

020 8965 5145

- **Geenleaf** – Traditional North Indian, Sri Lankan, Afgani, Lebanese, Indo Chinese and Gujarati Cuisine

020 8574 7779

- **Ragamama Ragasaan** - Traditional Punjabi, Gujarati, Indo Chinese, African and Sri Lankan Cuisine

020 8839 0880

- **Payal** - Traditional Pakistani, Punjabi and Gujarati Cuisine

0203 150 2520

- **McCalla's** - Traditional Caribbean Cuisine

020 8115 2155

- **Burrells** - Traditional West Indian & African Cuisine

020 7221 9252





NONSUCH MANSION

Venue Capacity

Civil Ceremony – 120 people

We are licensed for civil ceremonies in our Orchid Room and can fit exactly 120 people seated.

A seated meal in the mansion – 120 people

We can seat 120 guests in the Orchid room for your sit-down meal on a maximum number of 12 round tables with 10 guests around each. There is not enough space to fit a stage if your guest list is at full capacity.

A seated meal in a marquee on our formal lawns – 300 people

The marquee will be situated on our formal lawns surrounded with beautiful gardens and a stunning view of Nonsuch Mansion. This is something that needs to be sourced externally and at an additional cost. The marquee must be erected the morning of the wedding and dismantled by 10am the following day.

Standing capacity inside The Mansion – 200 people

If you're looking to have a party inside the mansion, our maximum capacity is 200 standing. Our fire safety regulations do not allow for any more.





NONSUCH MANSION

ACCOMMODATION

Enjoy exclusive use of our fantastic 2nd floor apartment with 11 boutique bedrooms from 15.00 for £2000. Let our team continue to spoil you and your guests with a delicious continental breakfast served in your very own lounge diner prior to departure at 10am.



Exclusive Venue Hire Prices

	Sun- Thurs	Fri	Sat
High Season	£7,000	£10,000	£14,000
June- September			
Middle Season	£6,500	£10,000	£12,000
May, Apr, Oct, Dec			
Low Season	£6,000	£7,000	£10,000
Jan, Feb, Mar, Nov			

Accommodation

£2,000

11 boutique bedrooms on your wedding day with a continental breakfast served the morning after

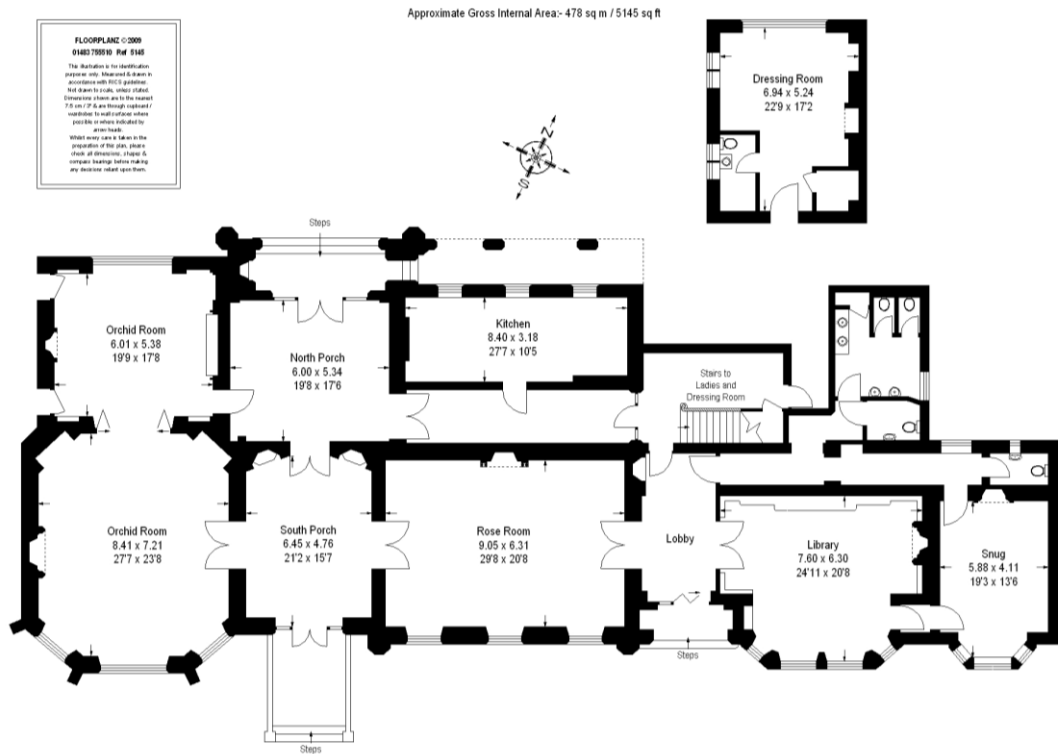
Check in 15.00 / Check out 10.00

*We ask for full payment upfront to secure the date.

*Excluding public holidays

*License until midnight - £1,200 per hour to extend.





Event Management

Some useful information for you and your caterer:

- We will be on hand leading up to the event for any questions you and your caterer may have.
- Your caterer must have adequate staff available to setup, run and clear down the event. We will supply one member of our team to be onsite on the day to act as a point of contact. Please ask for our 'dry hire key information' pack if you wish to know more on this.
- The Mansion must be left in a clean and tidy state. All equipment and trash relating to the event must be removed immediately so that Nonsuch Mansion is available for normal use the next day.
- Guests are welcome to use natural confetti and bubbles outdoors only. Please note that throwing rice is prohibited because of the danger it poses to wildlife. Confetti cannons are strictly prohibited in all areas of the site.
- We are not licensed for fireworks, floating lanterns or pyrotechnic displays of any nature.